



DELTA MS4/MSP4

Aseptic Single Seat Valve

Description

The DELTA MS4 and MSP4 aseptic single seat valve series from APV are designed for applications in the food, beverage, dairy, pharmaceutical and chemical industries.

The housing is made of high resistant stainless steel AISI 316L with a product wetted surface finish of Ra 0.8 µm. All other non-product wetted stainless steel parts are made of stainless steel AISI 304.

The MSP4 valve has been developed especially for applications where elastomers are not acceptable in product wetted areas.

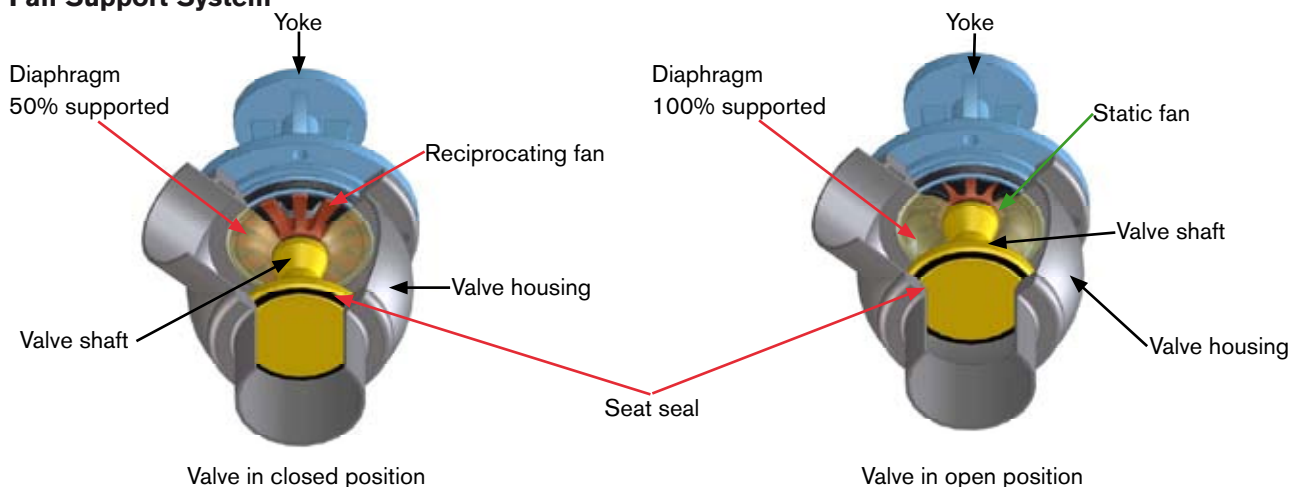
The DELTA MS4 and MSP4 valves are available in shut-off and change over design. It is also available as a tank outlet valve.

Operating Principle

The single layer diaphragm of the DELTA MS4 is made of TFM. The diaphragm, shaft and cone of the DELTA MSP4 is built from one TFM piece. The opening and closing of the valve is performed either by a pneumatic actuator or manually by means of a crank.

During opening and closing, the diaphragm is continuously supported by a unique fan support system, which relieves process pressure on the diaphragm, thus protecting it against overstress and/or pressure spikes. This system significantly increases diaphragm reliability and lifetime.

Fan Support System



Approvals

The following approvals are available.

Diaphragm shaft MSP4 & diaphragm: USP Class VI

Valve: EHEDG and 3A

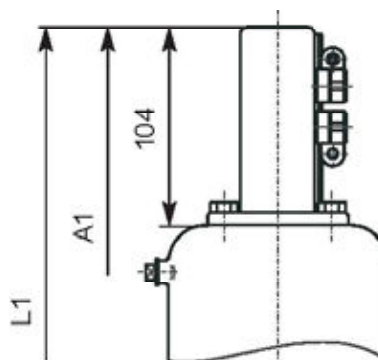
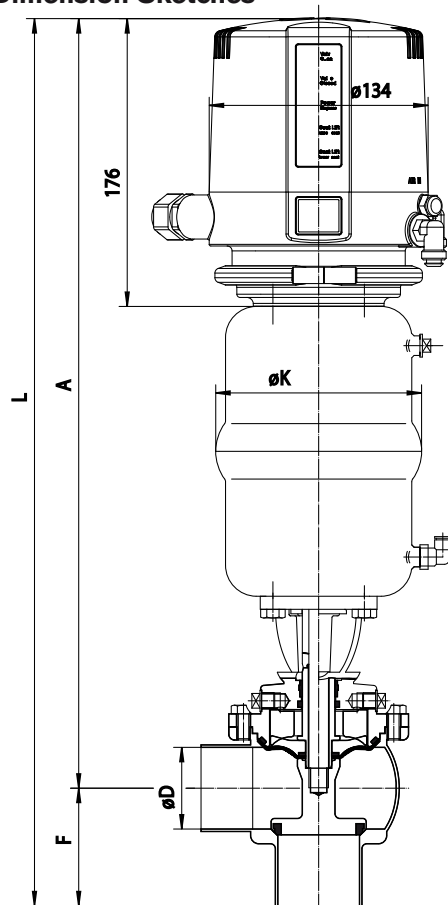
Options

The DELTA MS4 and MSP4 are available with a proximity switch holder (standard) or a control unit (option) to control open/closed valve position.

Product Specification

Sizes	DN25, DN40, DN50, DN65, DN80, DN100 1", 1.5", 2", 2.5", 3", 4"
Housing Configuration	MS4: MS41 (L), MS42 (T), MSE41 (KLL), MSE42 (KTL), MSE43 (KLT), MSE44 (KTT), MSES45 (LLS), MST41 (L), MST42 (T) MSP4: MSP41 (L), MSP42 (T), MSPE41 (KLL), MSPE42 (KTL), MSPE43 (KLT), MSPE 44 (KTT), MSPT 41 (L), MSPT42 (T)
Product Pressure	Max. 145 psi (10 bar)
Continuous Operating Temperature	275° F (135°C)
Sterilization Temperature	302°F (150°C) EPDM and 284°F (140°C) HNBR (approx. 20 min.)
Control Air Pressure	Min. 87 psi (6 bar), max. 116 psi (8 bar)
Product Wetted Parts	AISI 316 L (1.4404)
Non Product Wetted Parts	AISI 304 (1.4304)
Seal Material	Seat seal: EPDM, HNBR, FPM, and VMO Diaphragm + Diaphragm shaft MSP: TFM

Dimension Sketches



DN	øD	A	A1	F	øK	L	L1	Weight in kilo
25	26	419	347	50	86	469	397	4.2
40	38	466.5	394.5	67	126	533.5	461.5	7.1
50	50	472.5	400.5	72	126	544.5	472.5	7.1
65	66	529	457	85	189	614	542	7.9
80	81	538	466	98	189	636	564	14.2
100	100	555	483	111	189	666	594	15.2
Inch								
1"	22.2	477	345	50	86	467	395	4.2
1.5"	34.9	465	393	67	126	532	460	7.1
2"	47.6	471	399	72	126	543	471	7.1
2.5"	60.3	526	454	85	189	611	539	7.9
3"	72.9	532	460	100	189	632	560	14.5
4"	97.6	554	482	111	189	665	593	15.2

APV, An SPX Brand
611 Sugar Creek Road
Delavan, WI 53115

Phone: (888) 278-4321 Email: answers.us@apv.com

For more information about our worldwide locations, approvals, certifications, and local representatives, please visit www.apv.com.

SPX Corporation reserves the right to incorporate our latest design and material changes without notice or obligation. Design features, materials of construction and dimensional data, as described in this bulletin, are provided for your information only and should not be relied upon unless confirmed in writing.

Issued: 04/2009 8022-01-08-2008-US

Copyright © 2008 SPX Corporation

SPX
WHERE IDEAS MEET INDUSTRY