



## Plug Valves



Stainless Steel Flow Control Equipment for the  
Food, Beverage, Dairy, Cosmetics, Biotechnology,  
Pharmaceutical and Electronics Processing Industries

[www.toplineonline.com](http://www.toplineonline.com)

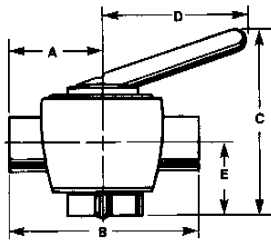
# Plug Valves

Plug valves are excellent sanitary devices with minimal pressure drops. The TOP FLO® Plug Valve features a tapered core assembly which allows easy cleaning while eliminating crevices which can lead to contamination.

These valves are constructed with a special taper which has been carefully designed to reduce wedging and galling. These rugged valves are made of type 304 or 316L stainless steel and come in Clamp or Butt-Weld end connections. Other connections available upon request. Available in rubber or steel plugs.

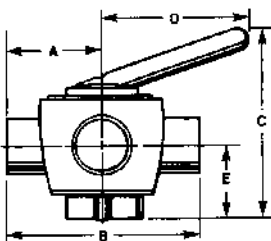
## Features

- Rubber (Silicone) or Stainless Steel Plug
- Materials Type 304 Stainless Steel
- Meets 3A Sanitary Finish
- Temperature to 100° F
- Bevel Seat Ends available on request
- 316 Stainless Steel available on request



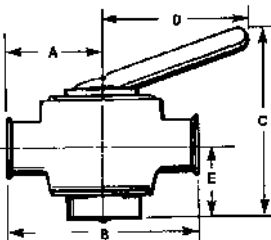
D10WW 2-WAY PLUG VALVE BUTT-WELD

Size (Tube O.D.)	A	B	C	D	E	Stock No. Stainless Steel Plug	Stock No. Rubber Plug
1	3-5/8	7-1/4	5-1/16	4-39/64	2-19/64	359610	359610R
1-1/2	2-29/32	7-13/16	6-7/16	5-5/8	2-13/32	359615	359615R
2	4-13/32	8-13/16	7-1/64	5-43/64	2-27/32	359620	359620R
2-1/2	5-1/8	10-1/4	8-51/64	5-59/64	3-25/64	359625	359625R
3	5-23/32	11-7/16	9-1/2	7-1/8	3-9/16	359630	359630R



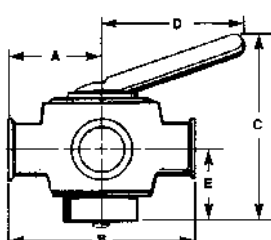
D11WWW 3-WAY PLUG VALVE BUTT-WELD

Size (Tube O.D.)	A	B	C	D	E	Stock No. Stainless Steel Plug	Stock No. Rubber Plug
1	3-5/8	7-1/4	5-1/16	4-39/64	2-19/64	359710	359710R
1-1/2	2-29/32	7-13/16	6-7/16	5-5/8	2-13/32	359715	359715R
2	4-13/32	8-13/16	7-1/16	5-43/64	2-27/32	359720	359720R
2-1/2	5-1/8	10-1/4	8-51/64	5-59/64	3-25/64	359725	359725R
3	5-23/32	11-7/16	9-1/2	7-1/8	3-9/16	359730	359730R



D10MP 2-WAY PLUG VALVE CLAMP

Size (Tube O.D.)	A	B	C	D	E	Stock No. Stainless Steel Plug	Stock No. Rubber Plug
1	2-9/16	4-9/16	5-1/16	4-39/64	2-19/64	329610	329610R
1-1/2	2-29/32	5-13/16	6-7/16	5-5/8	2-13/32	329615	329615R
2	3-13/32	6-13/16	7-1/16	5-43/64	2-27/32	329620	329620R
2-1/2	4-1/8	8-1/4	8-51/64	5-59/64	3-25/64	329625	329625R
3	4-23/32	9-7/16	9-1/2	7-7/8	3-9/16	329630	329630R



D11MP 3-WAY PLUG VALVE CLAMP

Size (Tube O.D.)	A	B	C	D	E	Stock No. Stainless Steel Plug	Stock No. Rubber Plug
1	2-9/16	4-9/16	5-1/16	4-39/64	2-19/64	329710	329710R
1-1/2	2-29/32	5-13/16	6-7/16	5-5/8	2-13/32	329715	329715R
2	3-13/32	6-13/16	7-1/16	5-43/64	2-27/32	329720	329720R
2-1/2	4-1/8	8-1/4	8-51/64	5-59/64	3-25/64	329725	329725R
3	4-23/32	9-7/16	9-1/2	7-7/8	3-9/16	329730	329730R

Note: Plug Valves, because of their inherent design, are recommended only for low pressure applications ... 25 psi maximum; for use with non-hazardous products, and at temperatures not to exceed 100°F. They are subject to leakage almost from the initial time of installation because of normal operating, maintenance, and cleaning procedures. CAUTION: Butt-Weld End dimension is minimum center to face length and will require skillful welding techniques and proper cooling of valve body to prevent warpage.



... the source for  
all your product needs  
in the process industries

Contact your Top Line Representative for Assistance

Office: P.O. Box 264 • Bradford, PA 16701

Plant: 21 Valley Hunt Drive • Lewis Run, PA 16738

Phone: 800-458-6095

814-362-4626

Fax: 814-362-4453

[www.toplineonline.com](http://www.toplineonline.com)

CAT-PV 10/08