



Stainless Steel Full Flow Ball Valves



Stainless Steel Flow Control Equipment for the
Food, Beverage, Dairy, Cosmetics, Biotechnology,
Pharmaceutical and Electronics Processing Industries

Top-Flo® Full Flow Ball Valves

TOP LINE

Top Line's Ball Valve is engineered to be the finest in the industry. Each valve is built to exacting specifications and is constructed to perform flawlessly in the most hostile environment.

Top Line's Ball Valves are utilized by firms which demand the uncompromised ability to regulate flow - from full flow open to various degrees of closure.



Tank bottom valve with actuation

IMPORTANT FEATURES

- 360 Degree Installation - Valve may be installed in any position.
- Teflon cavity fillers are precision machined to maintain sanitary environment.
- Easy "In-line" servicing. Unique design allows valve ends to remain attached while servicing valve body.
- No special tools needed.
- Minimal turbulence - maximum flow through.
- USDA approved
- ISO 5211 Mounting Pad

MECHANICAL SPECIFICATIONS

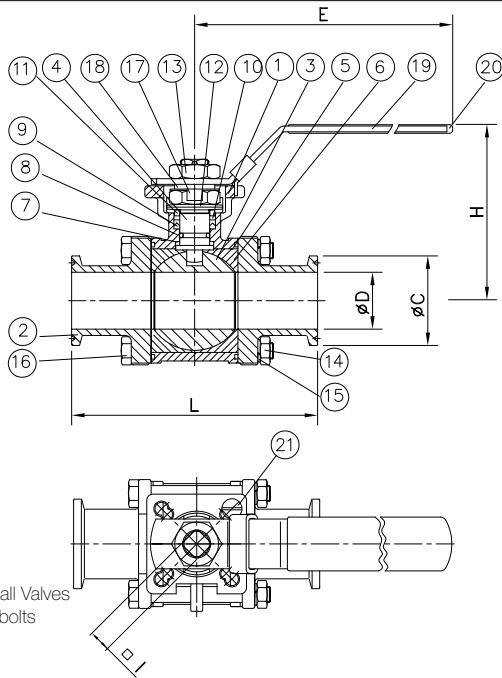
- Sizes - 1/2", 3/4", 1", 1-1/2", 2", 2-1/2", 3" and 4"
- Materials - 316 Stainless Steel
- Teflon seating
- Connections - Clamp & Butt-weld. Other connections available upon inquiry
- Infinite number of closure positions
- Locking handle
- Pressure - 1,000 psi at 70°F sizes 1/2 - 2 - 800 psi at 70°F sizes 2-1/2 - 4
- True port
- Air & electric actuators available
- Double Teflon stem packing

Top Line TE Series electric actuators provide unsurpassed quality, reliability and value to your automated system

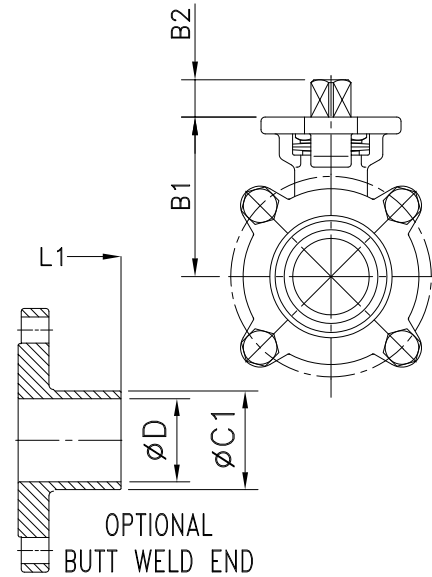
FEATURES

- Multiple voltages available : 24VAC, 24VDC, and 115VAC single phase to fit your process needs
- Nema 4, 4X & IP67 lightweight polyester powder coated aluminum housing
- External manual override so you won't need to worry in a power failure
- Four limit switches – two for operation / two auxiliary dry contacts
- Anti-condensation space heater for reduced downtime and increased reliability
- Visual position indicator for your convenience
- Captive cover bolts for your convenience





2 1/2" - 4" Ball Valves have 6 stud bolts

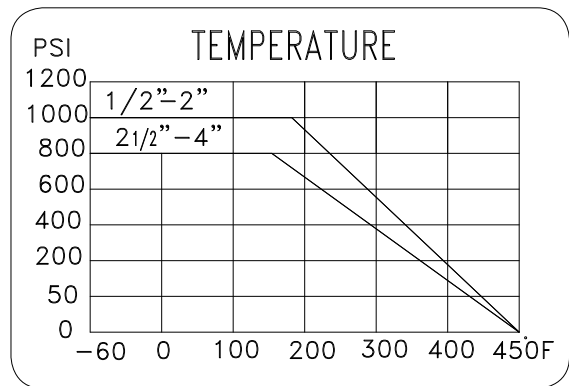


MATERIALS LIST

NO.	PART NAME	QTY	MATERIALS
1	BODY	1	CF8M (316SS)
2	END CAP	2	CF8M (316SS)
3	BALL	1	316SS
4	STEM	1	316SS
5	JOINT GASKET	2	PTFE
6	SEAT/CAVITY FILLER	2	PTFE
7	STEM SEAL	1	PTFE
8	O-RING	1	FDA VITON
9	V-RING PACKING	1SET	PTFE
10	BUSHING	1	50% S.S. Powder filled PTFE
11	GLAND RING	1	304SS
12	BELLEVILLE WASHER	2	301SS
13	STEM NUT	2	304SS
14	BOLT	*	304SS
15	WASHER	**	304SS
16	BOLT NUT	**	304SS
17	LOCK SADDLE	1	304SS
18	WASHER	1	304SS
19	HANDLE	1	304SS
20	HANDLE SLEEVE	1	VINYL
21	STOP PIN	1	304SS

* FOR 1/2" TO 2"-4PCS. ; FOR 2 1/2" TO 4"-6PCS.

** FOR 1/2" TO 2"-4PCS. ; FOR 2 1/2" TO 4"-12PCS.



Dimensional Specifications

CLAMP END/WELD END DIMENSIONS

* TORQUE IN IN/LBS

SIZE	B1	B2	ØC	ØC1	ØD	E	H	□ I	L	L1	WT #	TORQUE*	ISO5211
1/2"	1.58	0.35	0.98	0.50	0.37	5.04	2.78	9MM	3.50	3.50	1.60	57	F04 F05
3/4"	1.71	0.35	0.98	0.75	0.62	5.04	2.91	9MM	3.98	3.98	1.80	143	F04 F05
1"	2.05	0.43	1.98	1.00	0.87	6.54	3.36	11MM	4.49	4.49	3.05	184	F04 F05
1 1/2"	2.59	0.61	1.98	1.50	1.37	8.46	3.92	14MM	5.51	5.51	6.90	379	F05 F07
2"	2.91	0.61	2.54	2.00	1.87	8.46	4.24	14MM	6.14	6.14	9.65	432	F05 F07
2 1/2"	3.66	0.65	3.06	2.50	2.37	12.68	5.74	17MM	7.76	7.76	20.65	743	F07 F10
3"	4.02	0.65	3.58	3.00	2.87	12.68	6.09	17MM	9.02	9.02	29.10	857	F07 F10
4"	5.20	0.85	4.68	4.00	3.83	12.44	7.40	22MM	9.48	9.48	45.85	1708	F10

TOP LINE

PROCESS EQUIPMENT COMPANY

. . . the source for
all your product needs
in the process industries

Contact your Top Line Representative for Assistance

Office: P.O. Box 264 · Bradford, PA 16701

Plant: 21 Valley Hunt Drive · Lewis Run, PA 16738

800-458-6095

814-362-4626

Fax: 814-362-4453

PUMPS & STRAINERS- Centrifugal, Rotary Lobe, Filters and Strainers



VALVES - Manual, Actuated, Diaphragm



FITTINGS - Clamp, Sanitary Butt Weld, Bevel Seat, Tube OD Butt weld, Custom, Biopharm



TUBING, GAUGES, SIGHT GLASSES, BRAIDED HOSE

